



strada dei Colli, 30
61100 PESARO - ITALIA
tel./fax 0721/55279
E-mail info@paolonipesaro.it
<http://www.paolonipesaro.it>
Part. IVA e cod. Fisc. 0043787 041 3
Iscrizione tribunale PS n° 3656 C.C.I.A.A 80579

La Perlina

Product applicator



Operating Manual
and Parts List

Keep this manual for future reference

TABLE OF CONTENTS

Description	4
Technical Specifications	5
Machine specifications:	5
Operating specification:	5
General machine specification (see Annex 1):	5
Working specifications:	5
Electrical installation specification (see Annex 2):	5
Compressed air supply:	6
Noise data	6
Compliance with safety regulations	7
Safety sign panel	7
REGULATIONS AND INSTRUCTIONS FOR USE	8
PARTS LIST	11
DECLARATION OF CONFORMITY	16
Guarantee: validity and conditions	17
CERTIFICATE OF GUARANTEE	18

Description

“La Perlina” is a machine for impregnating wood. It has four (4) motors:

The first two motors (1st and 2nd) are in series and are fitted on two steel ramps with drive rollers and brushes for finishing.

The third (3rd) motor powers the paint spray pump.

The fourth (4th) motor is the extractor fan motor.

The machine was designed for impregnating smaller-sized pieces of wood with dye, such as matchboard, up to a maximum size of 100 x 200mm.

The wood is drawn through the machine by a drive mechanism. The only preliminary requirement is to set the spacing of the rollers to adjust it to the width of the workpiece.

The product is applied to the workpiece by a pump-driven spray; the piece is then driven between vertical rollers and horizontal brushes. This gives the piece a stain- and drip-free finish.

Technical Specifications

Machine specifications:

Dimensions 1963 x 820 x 1117mm
Total length with extensions 4933mm
Weight 220 kg
Weight with extensions 270 kg

Operating specification:

Speed: 16 metres/min.
Wood width, maximum: 100mm
Wood height, maximum: 200mm

General machine specification (see Annex 1):

Overall dimensions: Length: 1963mm
Width: 820mm
Height: 1117mm
Dimensions with extensions: Length: 4933mm
Clearance required: minimum 1000mm around the machine
Mass of complete machine: 250kg
Working specifications:
Product application speed: 16 metres/min
Workpiece width adjustment: 0 - 120mm
Maximum workpiece height: 240mm
Environmental: Ambient temperature: 5° - 40°C
Humidity: up to 90% for 20°C ambient
Operating altitude: < 1000m above sea level
Ex protection: none. Do not use in an atmosphere where an explosive gas and/or other material is present.
Specification of materials to be varnished: wood, wooden planks

Electrical installation specification (see Annex 2):

Electric power: Three-phase motor: Single-phase motor:
Voltage: 380V +/- 10% Voltage : 220V +/- 10%
Frequency: 50Hz +/- 2% Frequency: 50Hz +/- 2%
Power installation, max.: Three-phase motor: 1.25kW Single-phase motor: 1.25kW
Drive motor: Three-phase motor: Single-phase motor:
380V; 0.33kW; 1400rpm 220V; 0.33kW ; 1400rpm
Pump motor: Three-phase motor: Single-phase motor:
380V ; 0,34kW 220V ; 0,34kW
Extractor fan motor (option): Three-phase motor: Single-phase motor:
380V; 0.25kW 220V; 0.25kW
Rotating brush motor: Three-phase motor: Single-phase motor:
380V; 0.33kW; 1400rpm 220V; 0.33kW ; 1400rpm

Compressed air supply:
Recommended pressure: 6-10bar

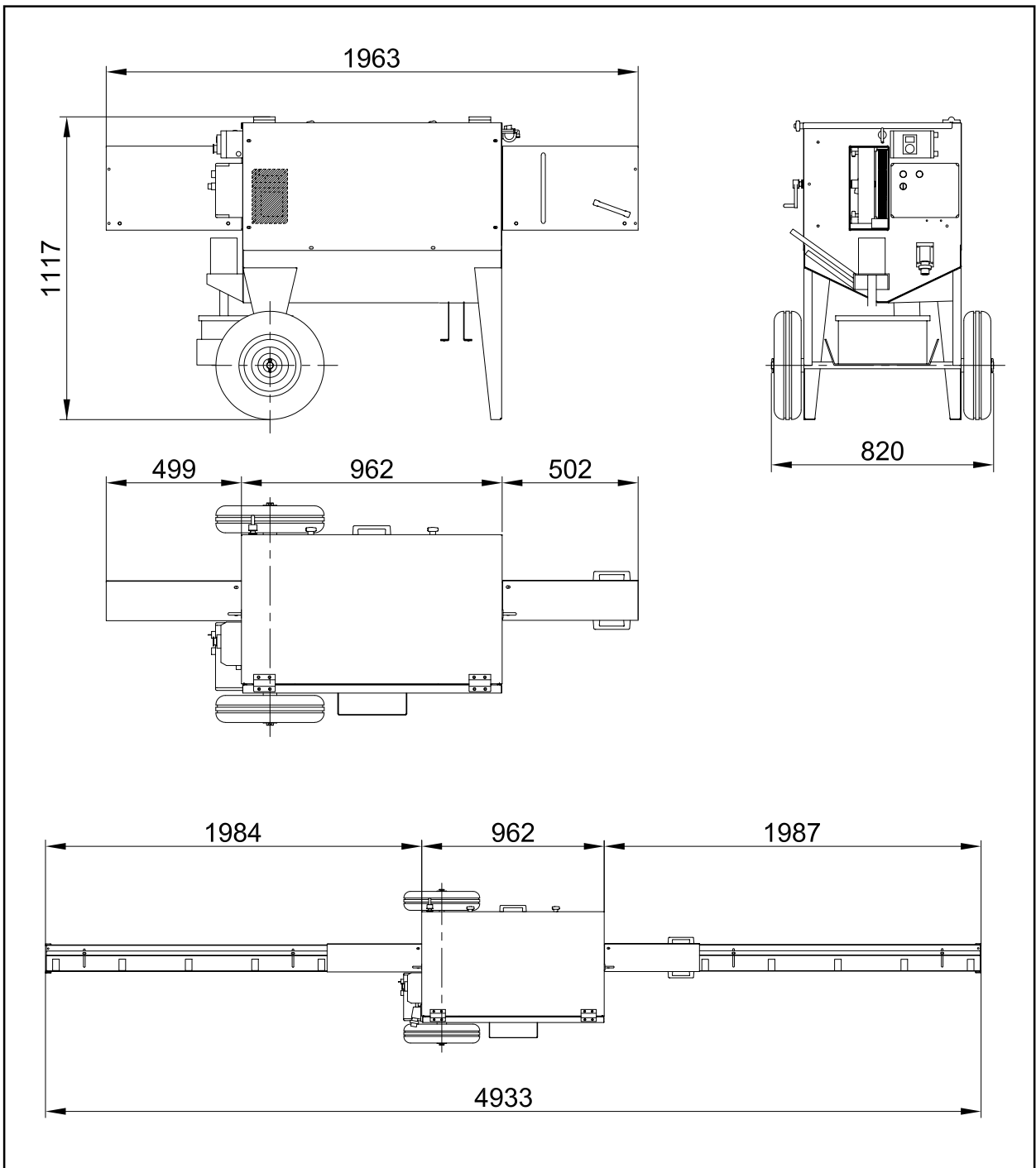
Noise data

A-weighted sound pressure level (L'pA) 74.0dBA
A-weighted background noise level 64.6dBA
K1A background noise correction 0.5dBA
K3A local environment correction 0.004
LpA = L'pA - K1A - K3A 74.0 dBA

All measurements made on 17-01-2008 in the

Paoloni Onelio & Figlio snc factory, Strada dei Colli, 30 - 61100 Pesaro.

The acoustic pressure levels shown for specific position were measured in compliance with the requirements of **UNI EN ISO 11202**.



Compliance with safety regulations

The "LA PERLINA" product applicator was designed and manufactured according to the following harmonised directives and standards:

Machinery directive 98/37/CE and successive modifications and inclusions:

- **IEC EN 60204-1:1998** – Safety of machinery. Electrical equipment of machines – Part 1: General requirements.
- **IEC EN 12100-1:2005** – Safety of machinery. Fundamental concepts, general design principles - Part 1: Basic terminology, methodology.
- **IEC EN 12100-2:2005** – Safety of machinery. Fundamental concepts, general design principles - Part 2: Technical principles.

Electromagnetic Compatibility Directive 89/336/CEE and successive modifications and inclusions: .

- **IEC EN 61000-6-3:2002** – Generic standards – Emissions for residential, commercial and light industry environment.
- **IEC EN 61000-6-1:2002** – Generic standards – Immunity for residential, commercial and light industry environment.

Low voltage directive 73/23/CEE and successive modifications and inclusions.

- **IEC EN 60204-1:1998** – Safety of machinery. Electrical equipment of machinery – Part 1: General requirements.

Safety sign panel

VIETATO
RIMUOVERE I CARTER
DI PROTEZIONE
CON MACCHINA
IN MOTO

Caution: do not remove covers when the machine is running



Wearing of safety shoes for protection against accidents at work is obligatory



Wearing of protective gloves is obligatory



Ground connection point



Turn the knob this way to tighten the drive rollers



Turn the knob this way to loosen the drive rollers

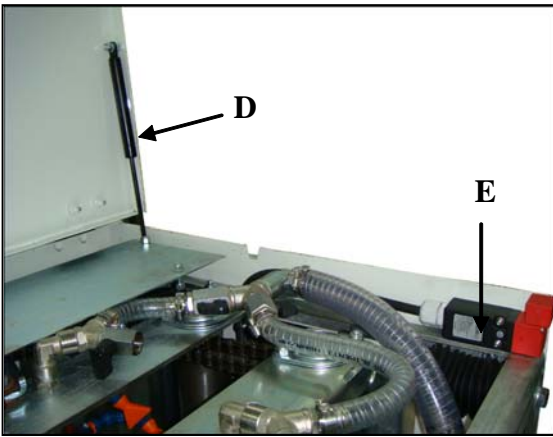


Lifting/anchor point

USE ONLY
WATER-SOLUBLE PAINT

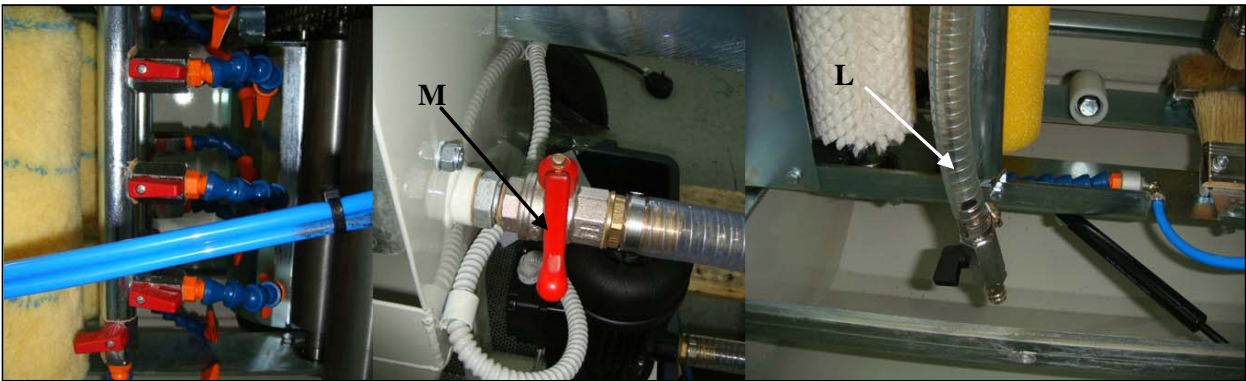
USE ONLY a self-adhesive label: USE ONLY WATER-SOLUBLE PAINT

PAOLONI ONELIO & FIGLIO s.n.c.		STRADA DEI COLLI, 30 61100 PESARO - ITALIA TEL. e FAX 0039(0) 721-55279 www.paolonipesaro.com	CE
TIPO MACCHINA	verniciatrice LA PERLINA		
ANNO DI COSTRUZIONE	<input type="text"/>	MATRICOLA N°	<input type="text"/>
VOLT	<input type="text"/>	FASI	<input type="text"/>
POTENZA KW	<input type="text"/>		
MASSA KG	<input type="text" value="200"/>	FREQUENZA HZ	<input type="text" value="50"/>



REGULATIONS AND INSTRUCTIONS FOR USE

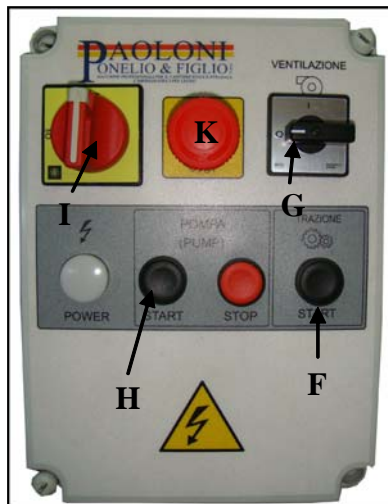
When the upper cover of the machine is opened, the safety system (E) is automatically actuated and the machine is shut down. The machine stops working, except for the pump which continues to run even if the cover is opened for circulating clean water during cleaning. The two pistons (D) lift the cover.



Adjust the power (M), the direction and number of jets so as to spray the liquid in smoothly and homogeneously over the whole surface of the wood.

Tube (L) must be tightened as its only function is to carry water during machine cleaning.

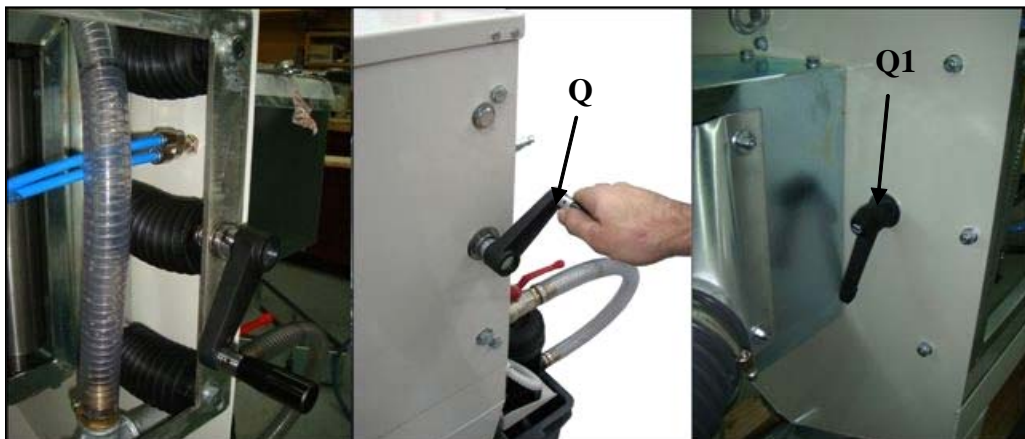
Put the liquid in the container and the pump in the recipient.



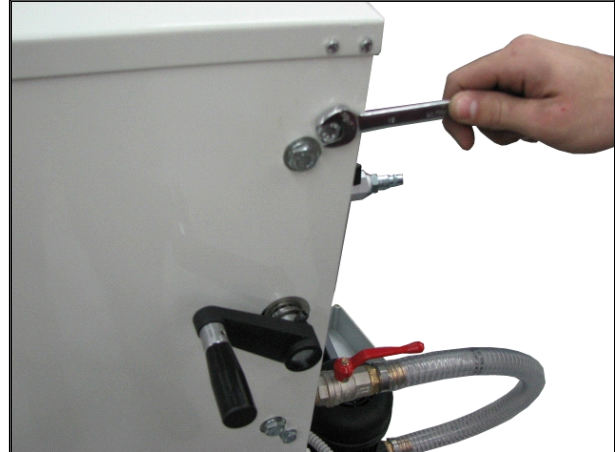
De-activate the emergency stop button (K) and turn the main power switch (I). Press the drive motor button (F) and the pump (H) and turn the extractor fan switch (G). Press the STOP button to the right of (H) to stop the pump.



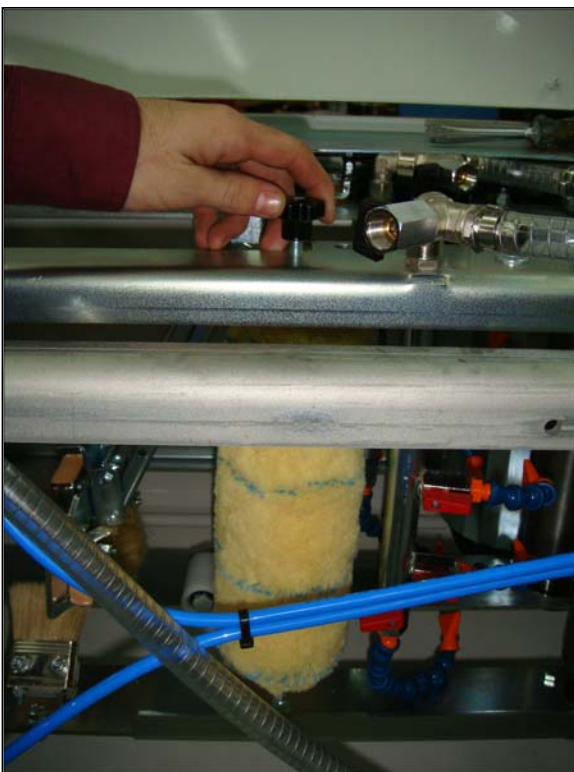
Set the entry and exit extensions manually, making sure that the pieces of wood are well supported.



Adjust the machine thickness by inserting the wooden workpiece until it comes up against the drive rollers. Turn handle (Q) until the wood is set snugly between the rollers. Then tighten handle (Q1) to fix the setting distance between the two sections of rollers.

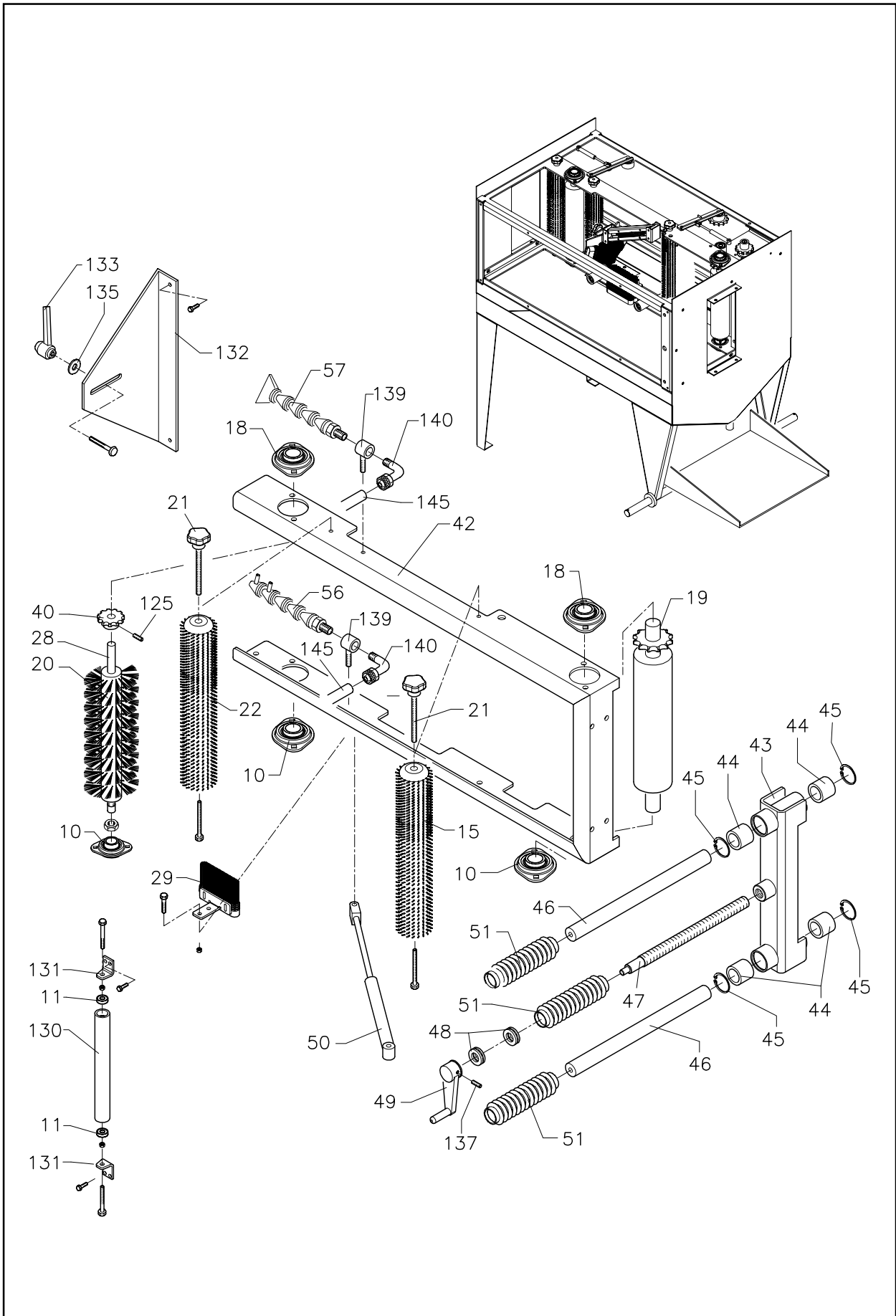


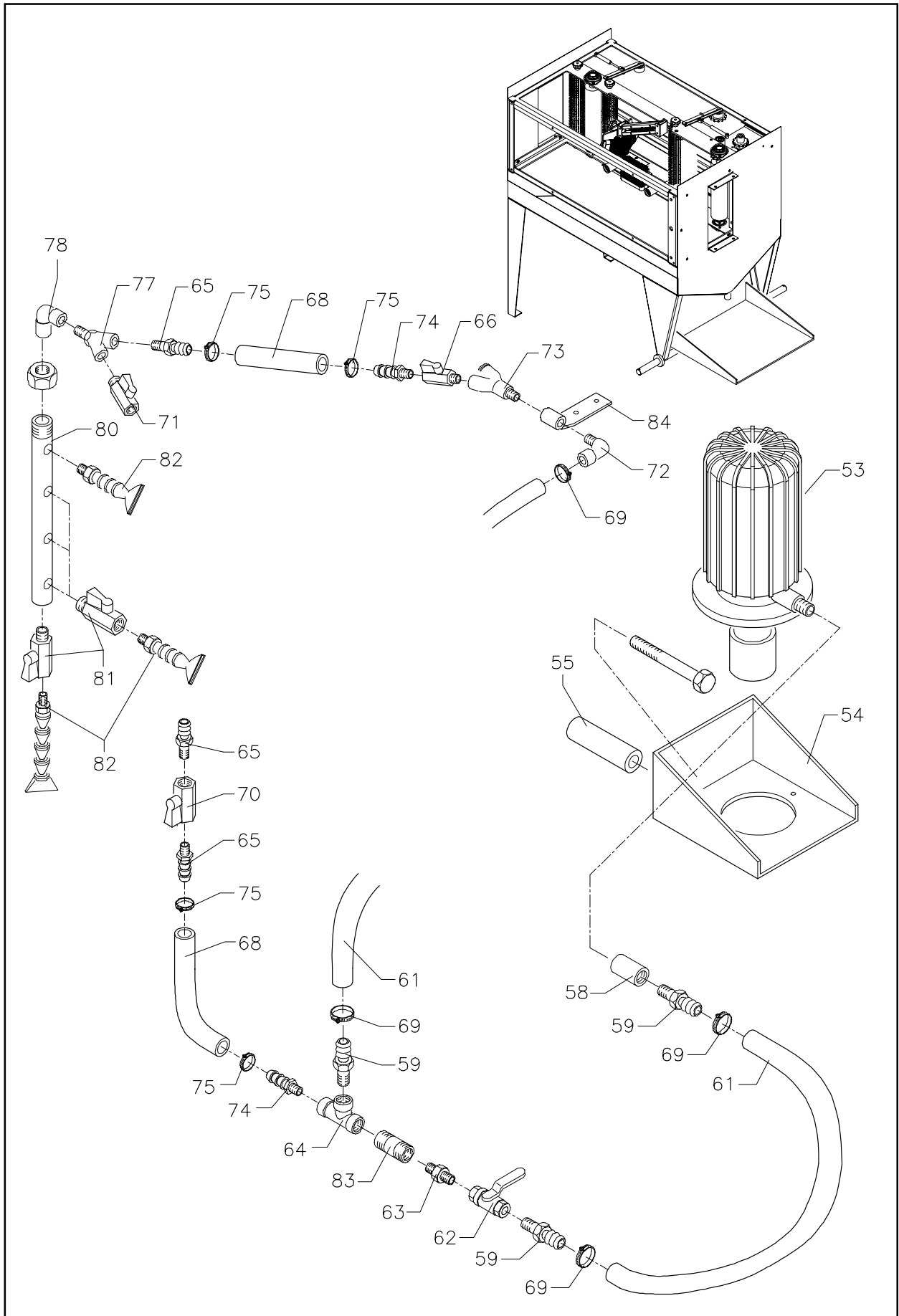
To remove the side panels and clean the inside of the machine, remove handle (A) and extract the panel bolts.

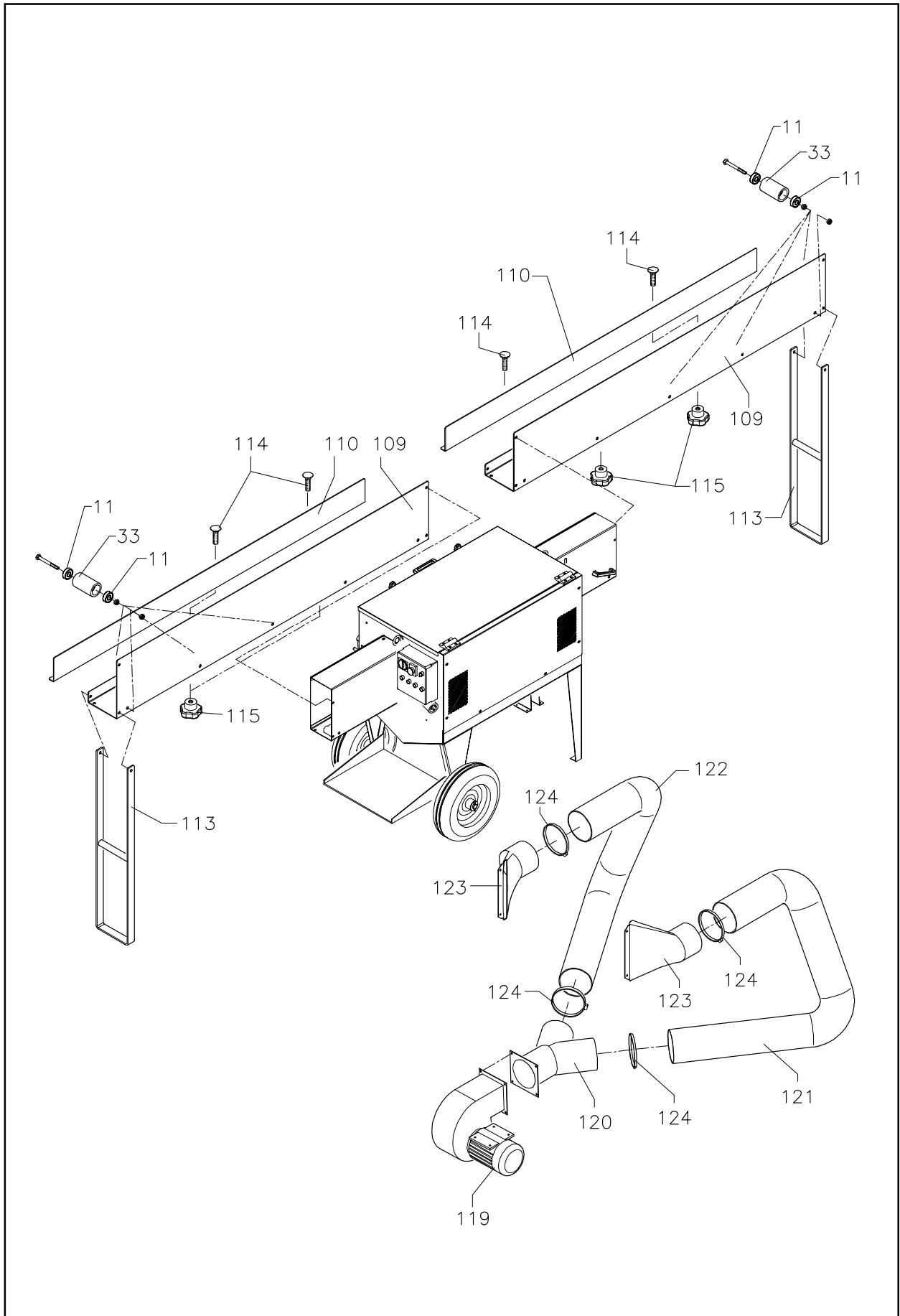


To clean the inside of the machine:

- Remove the rollers inside the machine and clean them in a container filled with clean water.
 - Put water in the circuit. When the liquid circuit is clean, change the filtered water and put clean water in the container you use for the product.
- Fill tube (L) (see above) with water under full pressure.







DECLARATION OF CONFORMITY

THE MANUFACTURER OF THIS PRODUCT IS
PAOLONI ONELIO & FIGLIO s.n.c. of 61100 Pesaro, Italy

THE MANUFACTURER HEREBY DECLARES UNDER HIS SOLE RESPONSIBILITY THAT THE
PRODUCT APPLICATOR MACHINE IDENTIFIED BELOW:

Model: LA PERLINA

S/N: _____

COMPLIES WITH THE FOLLOWING DIRECTIVES:
- MACHINERY DIRECTIVE 98/37/CE, MODIFIED
- ELECTROMAGNETIC COMPATIBILITY DIRECTIVE 89/336/CEE, MODIFIED
- LOW VOLTAGE DIRECTIVE 73/23/CEE, MODIFIED

DURING DESIGN AND MANUFACTURE WE USED THE FOLLOWING
EUROPEAN STANDARDS AS REFERENCE:

IEC EN 60204-1:1998 – Safety of machinery. Electrical equipment of machinery –
– Part 1: General requirements.
UNI EN 12100-1:2005 – Safety of machinery.
Fundamental concepts and general design principles
– Part 1: Basic terminology.
UNI EN 12100-2:2005 – Safety of machinery. Fundamental concepts and general design principles
– Part 2: Technical Principles.

Date:.....

Signed:.....

(Full name of signatory and function):

Guarantee: validity and conditions

The machine described in this manual is guaranteed for 12 months from the date of delivery (considered as the date of receipt of the goods, as shown on the documents accompanying the machine during transport) in conformity with the provisions of the EU directive 1999/44/CE applied in Italy by the decree of 2 February 2002, no. 24. The guarantee applies to parts and, at the discretion of the manufacturer, to manufacturing faults and defects, and to any work necessary to remedy incorrect operation of the machine which has causes attributable to a fault in manufacture.

Components, electrical equipment and parts that are subject to wear (brushes, rollers, jets, etc.) are not covered by the guarantee.

The guarantee does not cover any parts damaged during transport or to installation or maintenance by the buyer not in accordance with instructions, due to negligence or failure to carry out tests and/or checks described in this manual, to lack of skill in use and for use that is not compliant with what is intended and explicitly described by the manufacturer.

The guarantee is only applicable with respect to the original purchaser, and under no circumstances covers replacement of the machine. The guarantee is no longer valid if the machine has been handled, modified and/or repaired by personnel without the express authorisation of the manufacturer. The manufacturer refuses all responsibility for direct or indirect damage or injury caused to people, objects and/or animals that are a result of faults of the machine and that can not be attributed to design faults or to forced stoppage in use of the machine.

Repair or replacement of defective parts is normally carried out at the client's premises. All travel, subsistence and insurance of personnel sent by the manufacturer to carry out any work and the cost of travelling time are at the client's expense.

If the technicians consider that it is not possible to carry out repair and/or maintenance work at the client's premises, the client must return the part to be repaired carriage paid or, if necessary, the machine, properly packed, to the manufacturer who will return the goods prepaid after having carried out the repair free of charge.

After expiry of the guarantee period any necessary work will be at the client's expense; in other words, the client shall pay for labour, travel, subsistence and insurance, the costs of parts replaced and any shipping costs for such parts. If substantial work is required, the manufacturer shall notify the client in advance of the approximate total cost of the work (errors and omissions excepted).

For all contestation or disputes the tribunal of Pesaro alone has jurisdiction.

CERTIFICATE OF GUARANTEE

Guarantee no.

Date of purchase

Machine model

Serial no.

Stamp of vendor

Part to be filled in by the client, cut off and sent in a sealed envelope to the Manufacturer

Guarantee no.

Machine model

Serial no.

Date of purchase

Stamp of vendor

PAOLONI ONELIO & FIGLIO s.n.c.

strada dei Colli, 30
61100 PESARO - ITALIA
tel./fax 0721/55279
E-mail info@paolonipesaro.it
http://www.paolonipesaro.it
Part. IVA e cod. Fisc. 0043787 041 3
Iscrizione tribunale PS n° 3656 C.C.I.A.A 80579

TECHNICAL SUPPORT DEPARTMENT

Tel. ++39-0721/55279

Fax. ++39-0721/55279

Part to be filled in by the client, cut off and sent in a sealed envelope to the Manufacturer

Purchaser

Person in charge

Street

Town **Post code** **County**

Telephone **Fax.**

Stamp and signature

PAOLONI ONELIO & FIGLIO s.n.c.

strada dei Colli, 30
61100 PESARO - ITALIA
tel./fax 0721/55279
E-mail info@paolonipesaro.it
<http://www.paolonipesaro.it>

